



## Unpacking Instructions for The da Vinci Research Kit

Project: The da Vinci Research Kit

# Unpacking Documentation



## Table of Contents

The da Vinci Research Kit Contents ..... 3

MTM Unpacking..... 3

    Unpacking Steps:..... 3

PSM Unpacking ..... 5

    Unpacking Steps:..... 5

Foot Pedal Tray Unpacking ..... 9

    Unpacking Steps:..... 9

HRSV Unpacking..... 10

    Unpacking Steps:..... 10

List of Items to be sent back to Intuitive Surgical ..... 11

# The da Vinci Research Kit

## The da Vinci Research Kit Contents

The research kit consists of the following components:

- Two (2) Master Tool Manipulators – MTM (first generation da Vinci);
- Two (2) Patient Side Manipulators – PSM (first generation da Vinci);
- One (1) Foot Pedal Tray (first generation da Vinci);
- One (1) High Resolution Stereo Viewer HRSV (first generation da Vinci);
- One (1) accessories package that includes sterile adapters, cannula holders, cannulas, and four standard instruments.

Amongst the four cardboard boxes, the two slightly larger boxes contain the MTM, while the other two contain the PSM arms.

## MTM Unpacking

### Materials Required:

- Utility knife

### Contents of the package:

- 1 MTM

### Unpacking Steps:

1. Open the cardboard box using a utility knife to cut the shipping tape. Remove the top layer of the foam to expose the MTM.



Figure 1

2. Remove the loose MTM foam pieces to access the MTM.
3. Carefully lift the MTM from its cavity, as the joints are free to move. Be careful not to lift the MTM by grasping cables, wires, or other fragile components of the hardware.



Figure 2

4. Replace the foam pieces back in the cavity, close the box and save it for future use.

## PSM Unpacking

### Materials Required:

- Utility Knife
- Pair of Scissors
- Allen Wrench 9/64 (Imperial)

### Contents of the package:

- 1 PSM
- 1 Pitch Bracket (to be returned to Intuitive)

### Unpacking Steps:

1. Open the PSM box using a utility knife to cut the shipping tape. Remove the top end-cap to expose the PSM. Refer to Figure 3 below.



Figure 3

2. Carefully lift the PSM from its packing as some of the joints are free to move. Place the PSM on a flat table in order to work with it comfortably (make sure the cable is not pinched while resting on the table, as shown in Figure 4). Be careful not to lift the mechanism by grasping cables, wires, or other fragile components of the hardware. The PSM has several exposed cables and pulleys that can be damaged if handled inappropriately.



Figure 4

3. Loosen the tightening bolt on top of the pitch bracket to detach the upper half from the lower half of the pitch bracket. Refer to Figure 5 below.

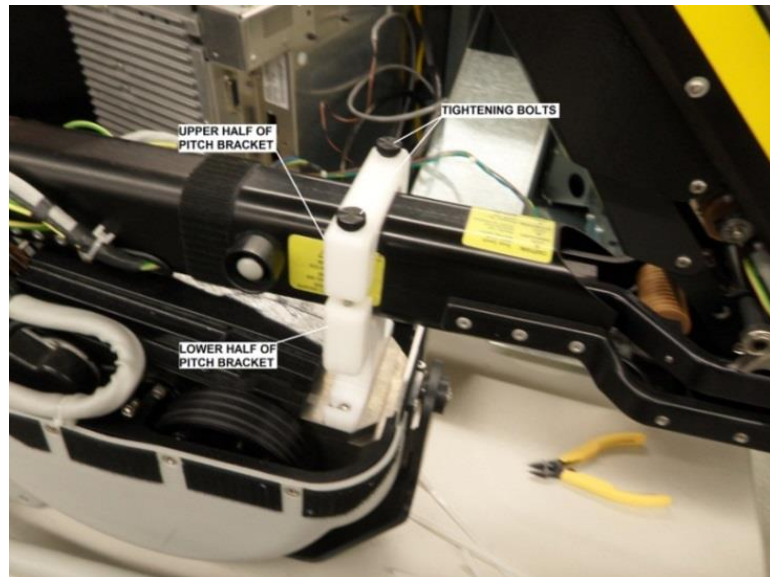


Figure 5

4. Loosen the two hex bolts on the lower half of the pitch bracket using a 6/64 Allen wrench at the base of the pitch bracket, then slide out the lower half of the pitch bracket. Once removed, tighten the hex bolts. Refer to Figure 6 below.

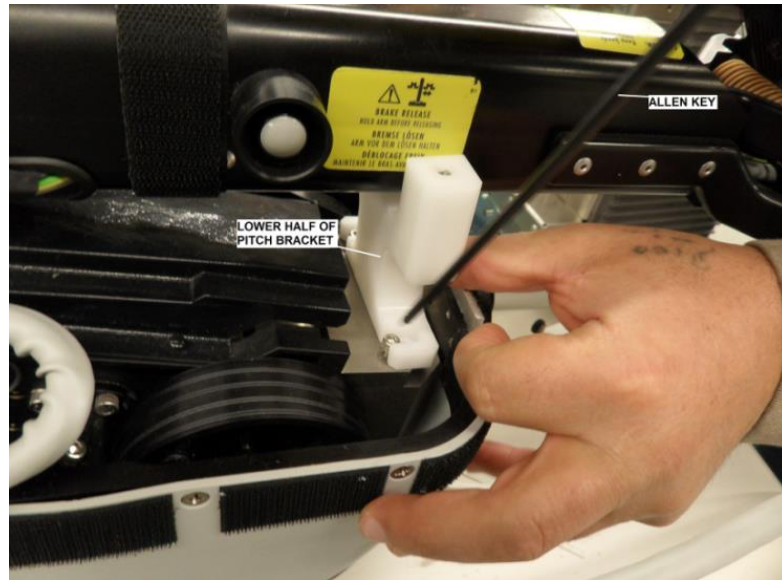


Figure 6

5. **Please save the pitch bracket and ship it back to Intuitive Surgical Inc.**
6. There are 14-inch tie wraps on the PSM to tie down some of the joints. Use a pair of scissors or side-cutters to cut all the tie wraps. The Figure 7 and Figure 8 below shows the locations of the tie wraps.

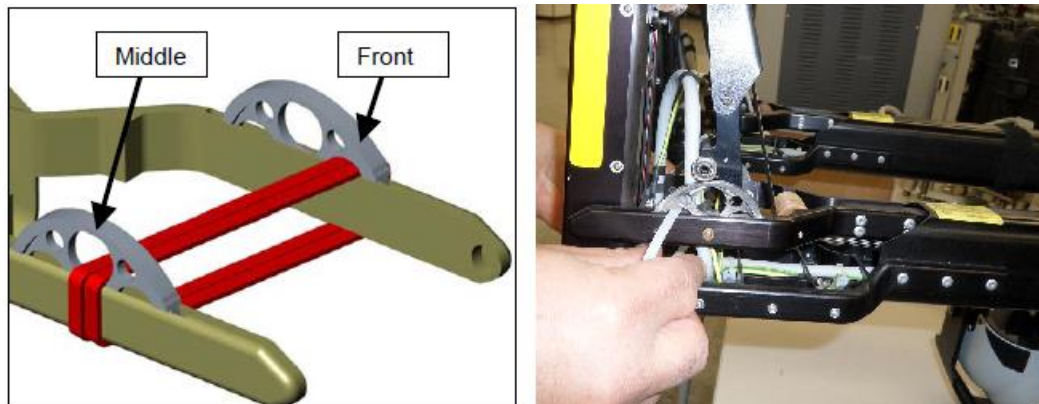


Figure 7

7. There may be a tie wrap present at the rear of the PSM against the Soft-Stop as shown below.



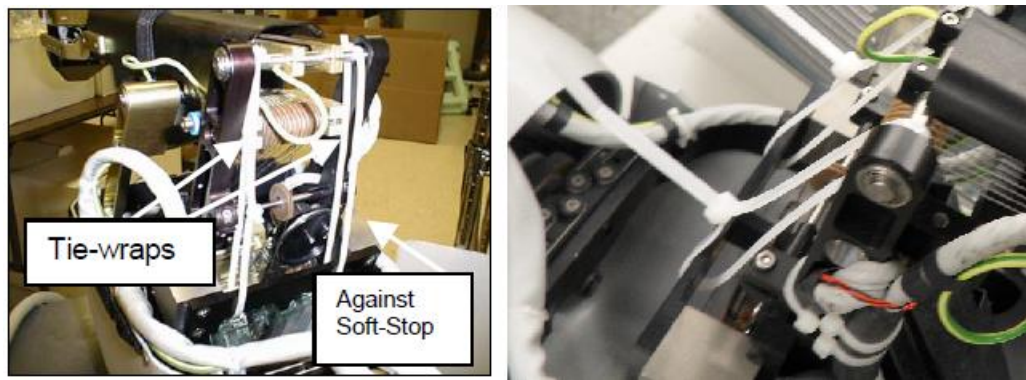


Figure 8

8. Save the shipping box for future use, replace the top end-cap and close the box.



## Foot Pedal Tray Unpacking

### Materials Required:

- Utility knife

### Contents of the package:

- 1 Foot pedal tray
- 1 foot pedal tray cable
- 2 VGA cables for HRSV\*
- 2 Power Cables for HRSV\*
- 1 Mic Cable for HRSV\*

\*In some cases, these cables are present inside the HRSV crate.

### Unpacking Steps:

1. Open the box by cutting the shipping tape with the utility knife.



Figure 9

2. Remove the foot pedal tray and cables.
3. Close the foot pedal box and save it for future use.

## HRSV Unpacking

### Contents of the package:

- 1 HRSV

### Unpacking Steps:

1. Open the crate by opening the two latches on the front of the crate.



Figure 10

**\*Please Note: The HRSV is heavy.**

**A minimum of two people are required to lift the HRSV out of its shipping crate**

2. Carefully lift the HRSV out of the crate. Support the HRSV from the bottom. Avoid lifting by grasping the thin sheet metal plate at the front of the HRSV.

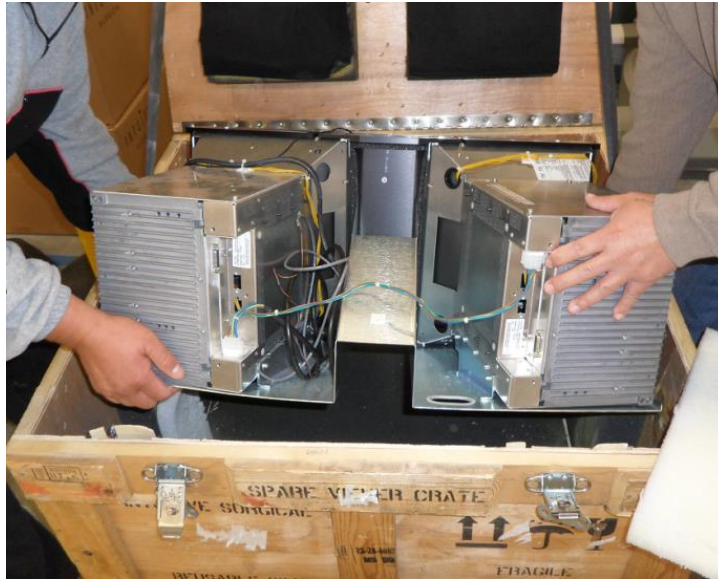


Figure 11

3. Replace the foam and close the crate and secure it using the latches. Please return the crate to Intuitive Surgical once the equipment has been unpacked.

### List of Items to be sent back to Intuitive Surgical

1. 2 Pitch Brackets, one from each of the PSMs.
2. HRSV crate along with the foam inside.

Note: Please place the Pitch Brackets in an envelope and secure the envelope inside the HRSV crate prior to shipping.

There is a pouch on the side of the HRSV crate; inside this pouch there is a return FedEx Airbill. Please attach the Airbill to the crate and contact FedEx freight to schedule a pick-up.

THANK YOU!